

Attention all competitors flying in to KAFF for Ben Lowell Aerial Confrontation 31 May '19:

This is a modified "pilot kit" produced by our friends at the Air Force Academy for previous competitions. Please look it over and familiarize yourselves with the airport layout and procedures. Note that runway assignments are subject to change. For now, expect the center runway if you arrive prior to 1000, possibly switching to the east runway after that. Be flexible, as final procedures for the contest are still subject to change!

Here's additional info that you'll need for this coming weekend's contest. Please read it carefully and forward any concerns.

1. You must -- **no exceptions** -- be operating under an active VFR flight plan when you contact Academy Tower. Put your PPR number in the "Remarks" portion of the flight plan, and build in a few extra minutes in case the tower asks you to hold prior to issuing a landing clearance. Unlike civilian airports, the tower will close your flight plan upon landing. Refer to the separate attachment for your specific PPR number (each N number has a unique PPR number). If you haven't filed a flight plan in many moons, call flight service and they'll walk you through it.
2. Do not fly west of the field prior to contacting the tower. You may approach from the north, northeast, east, southeast (staying clear of KCOS airspace), or south.
3. We will use the Midfield Hangar, the 94th FTS (Flying Training Squadron) hangar. It's ginormous, clean, has bathroom facilities, and is free of charge courtesy of your tax dollars.
4. Arrival: There are no arrival slots again this year. However, realize with the number of competitors, the need for tech inspections after registration, and the fact that flying will be over at 1800L, we need local folks to show up as soon after 0800L as possible to insure everyone has an opportunity to see the box on Friday!
 - a. Can you arrive earlier than 0800? NO.
 - b. Can you arrive later than 1800? Probably NOT.
 - c. If you need to divert for any reason, KFLY is 12nm to the east and KCOS is 12nm south-southeast.
5. Registration & Practice
 - a. You must complete registration and tech inspection first, then we'll direct you to the Boxmaster to sign up for a practice slot.
 - b. The box will open for practice starting at 1000L and we will plan to fly until at least 1800L.
 - c. The Boxmaster will brief you on frequencies, holding points, traffic pattern re-entry, etc.
 - d. Practice slots will be 10 minutes in length, so you should already be in one of the designated holds when your time arrives. Plan to start your engine about 15 minutes before your assigned time slot.

- e. Please take a look at the [IAC Contest Checklist](#) to ensure that you'll have everything necessary for registration.
6. Fuel is available at the Aero Club pumps (see diagram this document). You'll provide credit card information at registration and they will bill you after the competition ends. Disregard the fuel price indicated on the fuel plan diagram...it is somewhat more expensive this year.
7. Meals
 - a. The Best Western Plus will provide sack/boxed breakfasts on Saturday and Sunday for their guests.
 - b. We will have simple lunches available each day with a kitty donation encouraged- expect sub sandwiches, chips, drinks, brownies, etc.
 - c. We're on our own for dinner on Friday night. There are several restaurants within walking distance of the hotel.
 - d. The banquet will be on Saturday night, and we'll collect for that at registration as well.
8. Each competitor will receive a T-shirt with their registration, and we may have some additional T-shirts and patches available for sale on Sunday.
9. The cadets will shuttle competitors to and from the hotel. We're expecting a big turnout, so we'll need to use all available daylight. Therefore the hotel pickup will be at 0530 on Saturday and Sunday, with briefings at 0600. If you have wheels, please plan to car pool with some of your IAC friends to relieve the stress on military transportation...this is a BIG contest this year. Standby for changes...
10. Wx. The current forecast calls for flyable weather all three days with a chance of showers.
11. Plan to refuel aircraft Saturday before end of flying. Fuel will be limited Sunday to between 400 and 500 gal total.
12. Departures will be Sunday afternoon after the awards ceremony. The airfield is scheduled to close at 1800L.

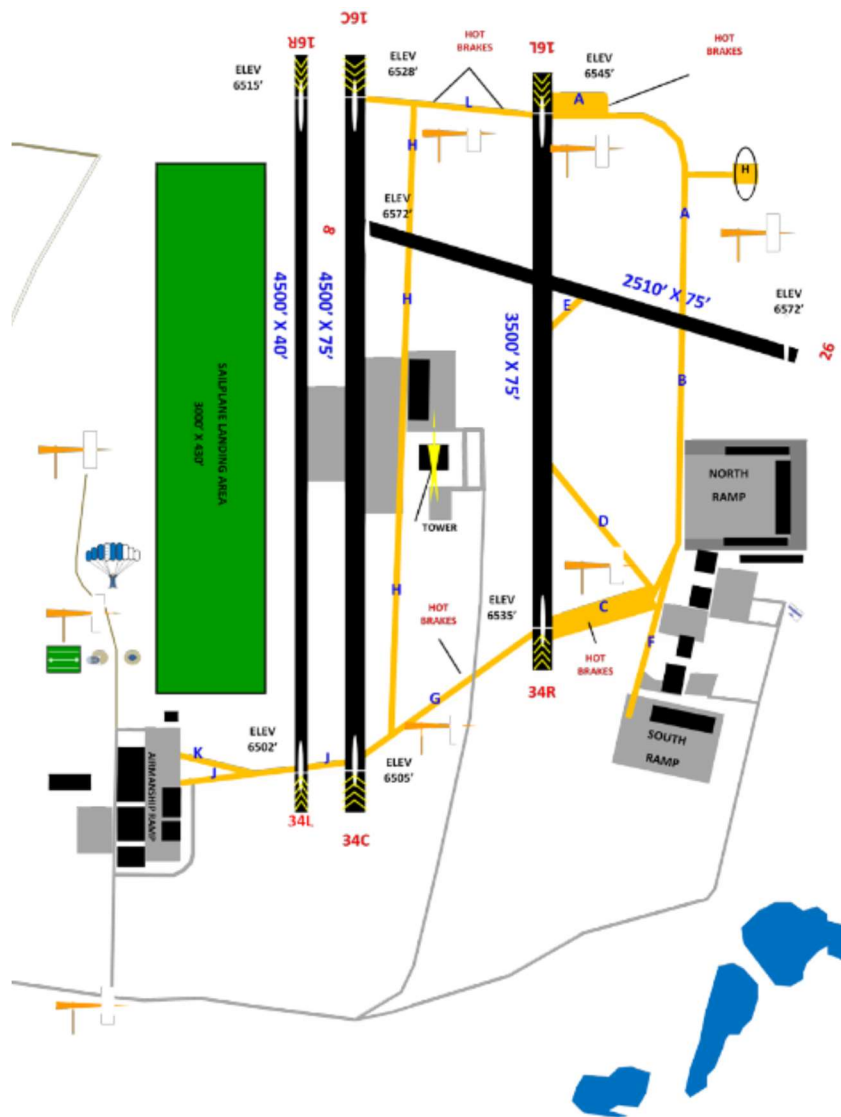
This is a lot of information, but in reality USAFA isn't much different than any towered airport. We will refresh you on all of this during the briefings, have your questions ready! Safety is paramount as always, and good communication is a key to that end.

This should be a great contest, and we're really looking forward to seeing you!

Until the box is hot...

Mike Arensmeyer, IAC12 Civilian Liaison
970-308-6864

Attachments not to be used for flight planning...refer to current approved charts for latest information including frequencies.



USAFA Airfield Diagram
N 38 ° - 58' 10" Latitude
W 104° - 48' 46" Longitude

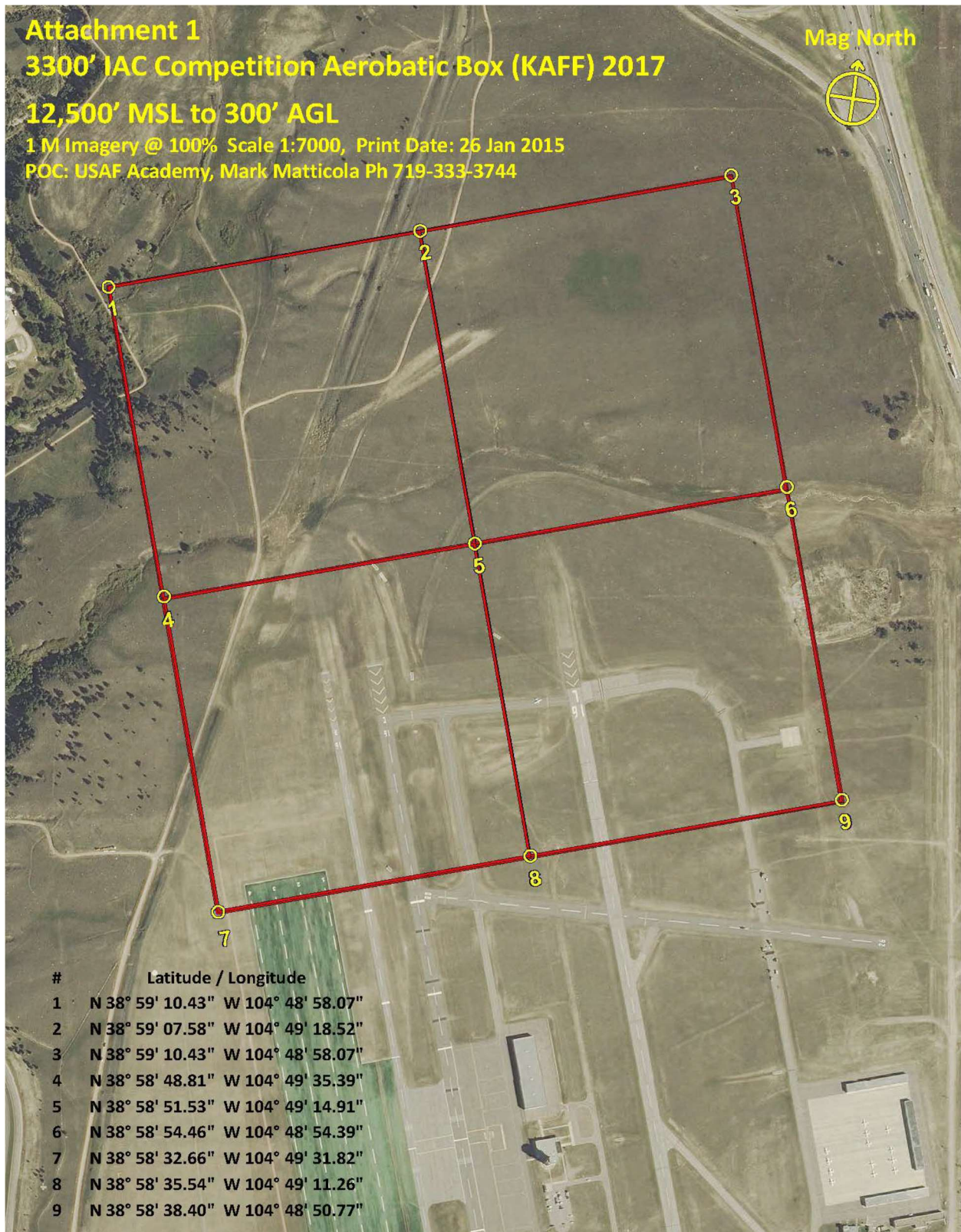
Attachment 1
3300' IAC Competition Aerobic Box (KAFF) 2017

12,500' MSL to 300' AGL

1 M Imagery @ 100% Scale 1:7000, Print Date: 26 Jan 2015

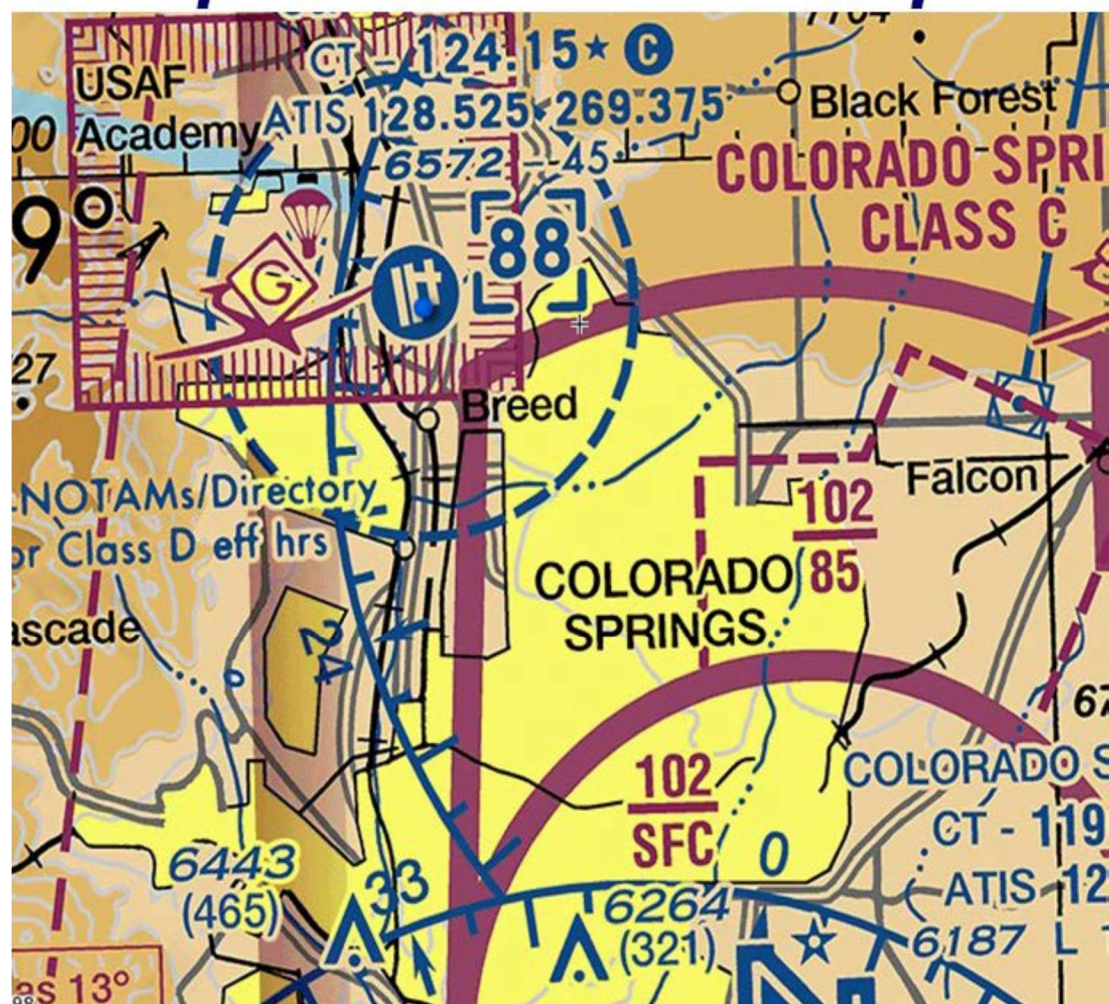
POC: USAF Academy, Mark Matticola Ph 719-333-3744

Mag North



#	Latitude / Longitude
1	N 38° 59' 10.43" W 104° 48' 58.07"
2	N 38° 59' 07.58" W 104° 49' 18.52"
3	N 38° 59' 10.43" W 104° 48' 58.07"
4	N 38° 58' 48.81" W 104° 49' 35.39"
5	N 38° 58' 51.53" W 104° 49' 14.91"
6	N 38° 58' 54.46" W 104° 48' 54.39"
7	N 38° 58' 32.66" W 104° 49' 31.82"
8	N 38° 58' 35.54" W 104° 49' 11.26"
9	N 38° 58' 38.40" W 104° 48' 50.77"

Competition - Local Airspace

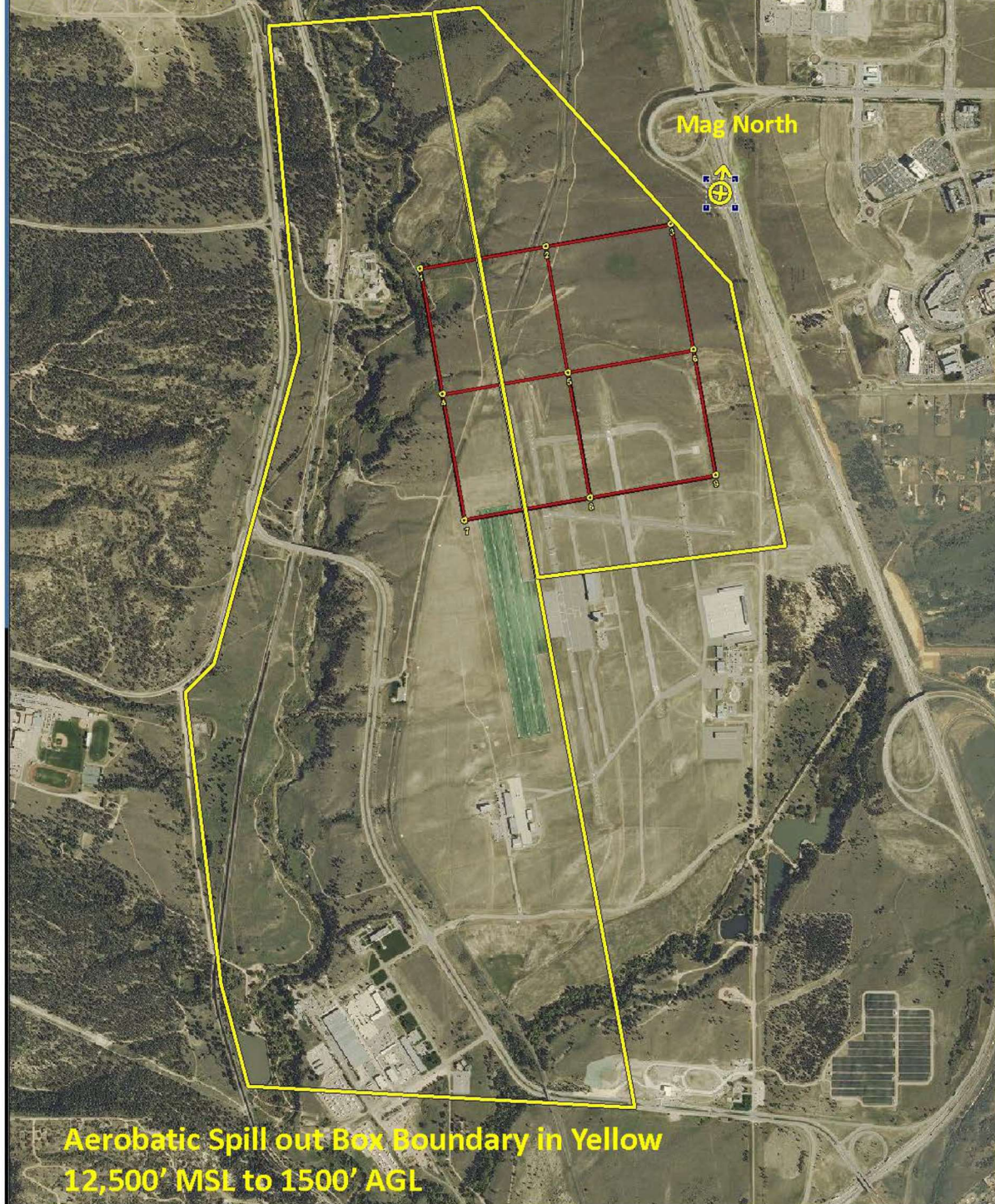


3300' IAC Competition Acro Box With East Across Areas (KAFF) 2017

1 M Imagery @ 30% Scale 1: 23,333, Print Date: 28 Jan 2015

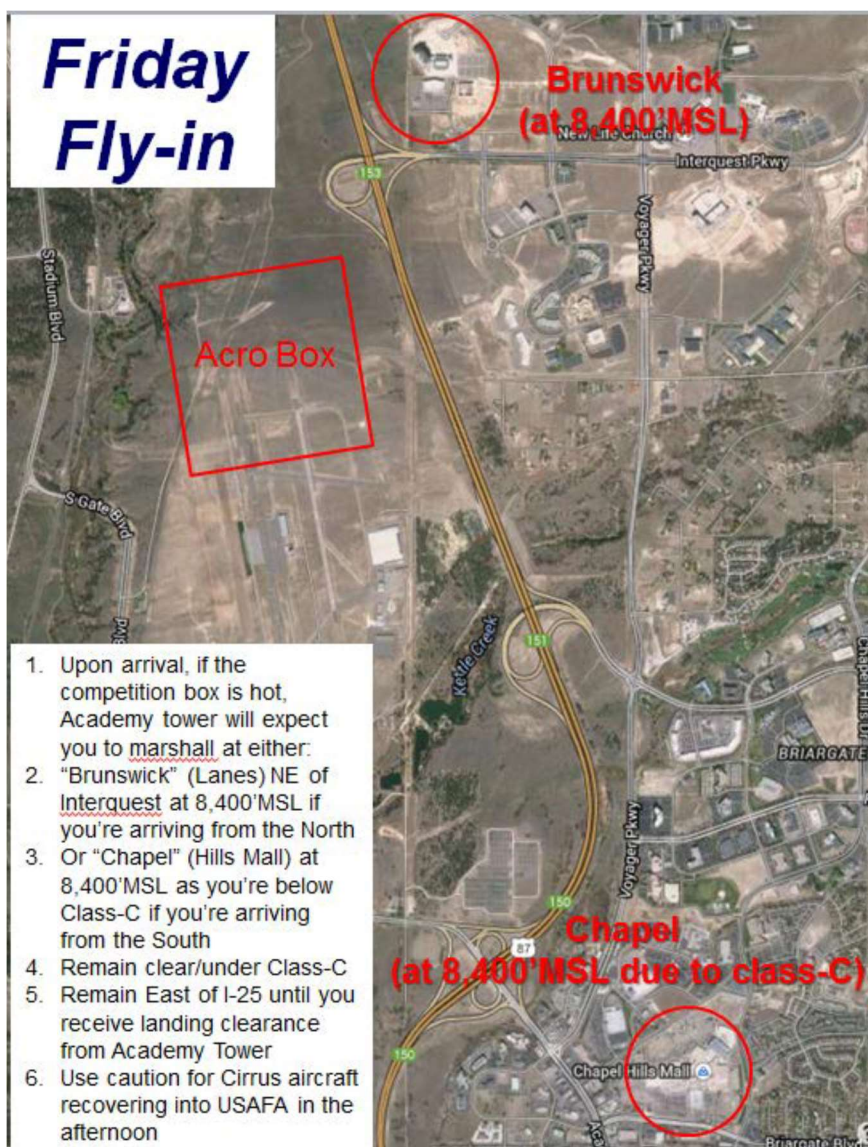
POC: USAF Academy, Mark Matticola Ph 719-333-3744

Attachment 2



Aerobatic Spill out Box Boundary in Yellow
12,500' MSL to 1500' AGL

Friday Fly-in



Competition-Fuel Plan

1. Aircraft will taxi to the N. Ramp
2. Contestants will fuel their own planes
3. Contestants fill out credit card agreement in advance
4. Aero Club cannot take cash because they don't have a cash fund
5. Gas available from 0630-1800
6. Unlimited fuel available through Sat
7. 500 gallons available on Sun
8. Aero Club will track the amount of fuel they get each time then
9. Aero Club will charge competitor once at the end of the competition
10. As of 14 Apr, fuel price is \$5.70/gal (may fluctuate)

